

# AQUAMAGIC

MARCH 2023

A PUBLICATION OF

**ADVANCED**  
PLUMBWARE

PO BOX 9433, NEWMARKET 1149, AUCKLAND

[ADVANCEDPLUMBWARE.CO.NZ](http://ADVANCEDPLUMBWARE.CO.NZ)



## ABOUT US

**AQUAMAGIC** is published by Advanced Plumbware, the niche New Zealand distributor of innovative floor, roof and in-sink drains sourced globally from renowned manufacturers, including **Brasshards, Rainware, Paige Stainless** and **Vinidex**.

These manufacturers are internationally recognised as market leaders in their respective categories and excel in the development and production of tiled floor grates, in-sink drain systems, outdoor showers, and commercial floor and roof drain systems. Advanced Plumbware is proud to be accredited as a supply partner for these products. You can view our website for further information: [advancedplumbware.co.nz](http://advancedplumbware.co.nz)

We welcome your enquiry about any product: email [info@advancedplumbware.co.nz](mailto:info@advancedplumbware.co.nz), or phone **+64-9-5221140**.

## LATEST RELEASES



### The new multi-function anti-infiltration overflow-relief device

Installation of the new compact multi-function 172XP100 delivers much greater efficiency and a far superior look than these ORGs:



- Provides effective venting and overflow relief functions
- Eliminates stormwater infiltration into the sewerage system
- Reduces waste water treatment costs
- Reduces likelihood of untreated discharges
- Watermark certified, meets Australian Standard WMTS-501-2016

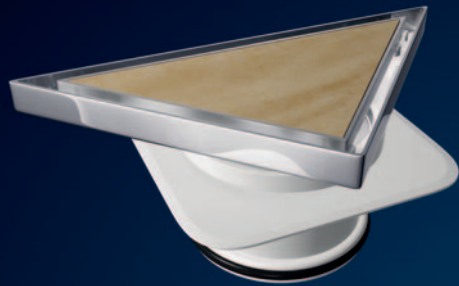
**172XP100 offers the best solution!**

Ask your preferred plumbing merchant for the 172XP100.



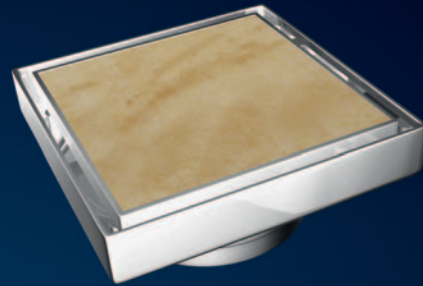
# FLOOR GRATES

Advanced Plumbware floor grates are manufactured to exacting standards using the latest computer-controlled casting processes to ensure the highest quality.



**CHROME ON BRASS  
FLOOR GRATE**

With leak control flange for 100mm DWV pipe



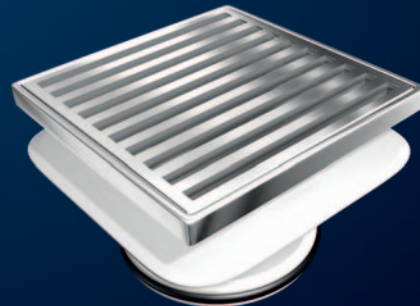
**CHROME ON BRASS  
TILE INSERT FLOOR GRATE**

Connects to 100mm DWV pipe



**STAINLESS STEEL  
GRADE 316 FLOOR GRATES**

Round or square with 80 or 100mm spigot



**STAINLESS STEEL  
GRADE 316 FLOOR GRATE**

With 100mm leak control flange outlet

# DRY BASKET ARRESTORS

The superior range of in-sink and in-floor dry basket arrestors



**IN-SINK DBA**

ISW90T is ideal for light use in commercial sinks with a 50mm trap. Krono 90.40 has a 40mm outlet for residential trap connection. Outer body and clamping ring are manufactured from high-impact polypropylene. The body has a 304 grade stainless steel upper trim, basket, and filter plate, and both fit 90mm sink outlet.

PRODUCT CODE

**ISW90T  
Krono 90.40**



**SINK-SHIELD® 2**

For use in commercial and industrial sinks. Manufactured entirely from 304 grade stainless steel with an EPDM rubber plug, and is suitable for more hard-wearing environments.

PRODUCT CODE

**V93027**



**SINK-SAFE® 2**

For heavy use in commercial and industrial sinks. Features a ball valve that allows the sink to be emptied using a handle below the sink. The remote sink emptying mechanism helps minimise burns from hot water and contact with fat, oil, grease or detergents.

PRODUCT CODE

**V93026**



**DRAIN-GUARD® 2**

For in-floor use in commercial and industrial applications. The filtering basket is concealed under a 150x150mm textured hinged grate cover, which has a wheel load capacity of 1100kg.

PRODUCT CODE

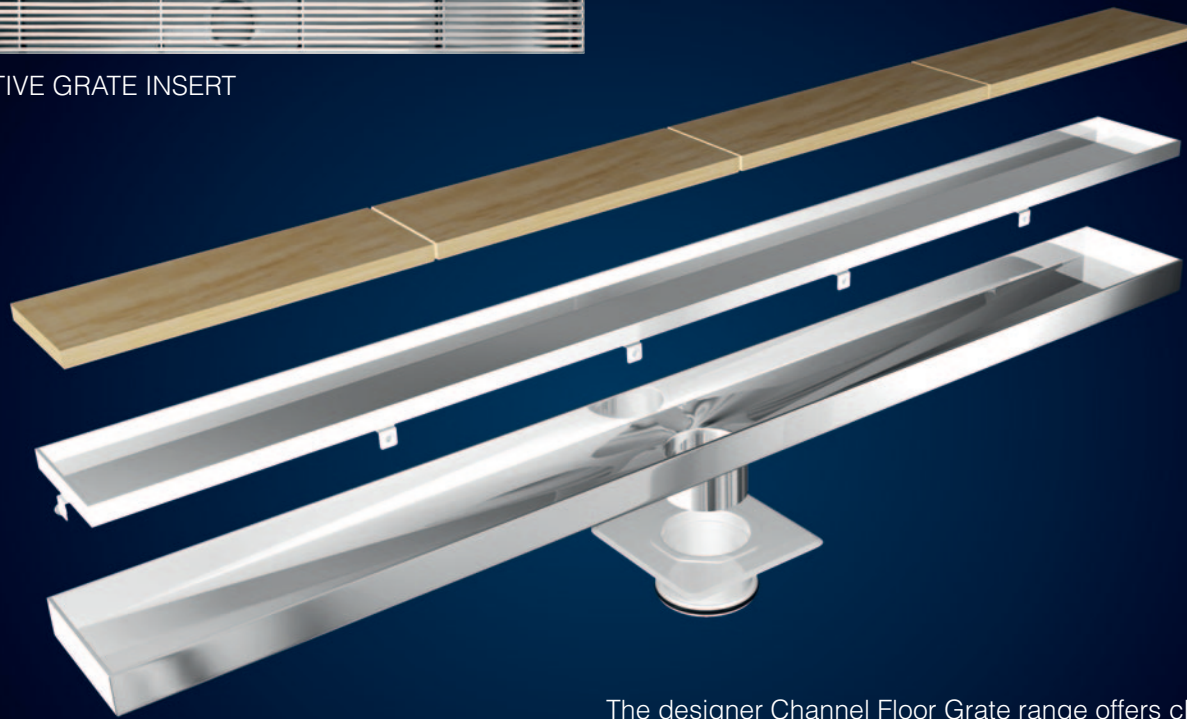
**V93040**



# CHANNEL FLOOR GRATES



ALTERNATIVE GRATE INSERT



The designer Channel Floor Grate range offers clean lines and superior durability that only 316 stainless steel can deliver. Incorporating the innovative Megaflex leak control flange, it offers a total solution for the project. Perfect installation is no longer impossible with the adjustability of height and tilt, while enabling positive engagement with the waterproof membrane for total peace of mind.

# OUTDOOR SHOWERS

## The most comprehensive outdoor shower range in Australia and New Zealand

Rainware outdoor showers are manufactured in Australia from certified 316 grade marine stainless steel and exported to the world. Rainware is certified ISO 9001 and provides a warranty second to none.



# ROOF & FLOOR DRAINS



SPS 225mm round push-in floor drain. 316 stainless steel with 150mm outlet.



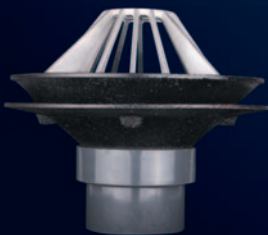
SPS 200mm square push-in floor drain. 316 stainless steel with 100mm outlet.



SPS 150mm round vari-level shallow body bucket trap. 304 stainless steel grate with cast iron body.



SPS 200mm square vari-level bucket trap. 316 stainless steel grate with cast iron body.



SPS 100mm all-purpose "Truflo" rain water outlet (RWO) offers the most versatile RWO body available.



Vinyl floor waste. Chrome on brass or 316 stainless steel grate with o-ring seal into 80mm or 100mm diameter pipe.



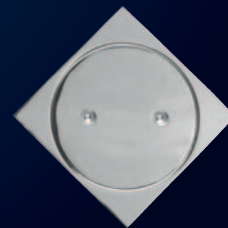
Vinyl floor cleanout chrome on brass with o-ring seal into 80mm or 100mm diameter pipe.



Polished brass cleanout pushes into 100mm diameter pipe.



Chrome on brass cleanout pushes into 100mm or 150mm diameter pipe.



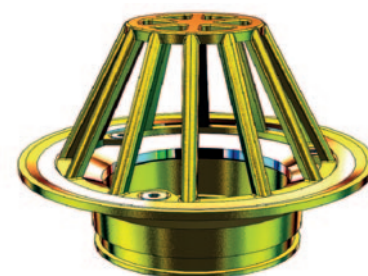
Square chrome on brass cleanout pushes into 100mm diameter pipe.

Advanced Plumbware offers a rapidly growing portfolio of residential and commercial plumbing and drainage fittings.

We welcome your enquiry and you will be assured of innovative product of outstanding quality as well as timely delivery and very competitive pricing.



PO BOX 9433, NEWMARKET 1149, AUCKLAND  
**ADVANCEDPLUMBWARE.CO.NZ**



## Domed roof outlet

100mm vertical spigot roof outlet. Complete brass unit, including clamp ring with o-ring connection to DWV pipe. Flat grate option is also available in brass or grade 316 stainless steel.